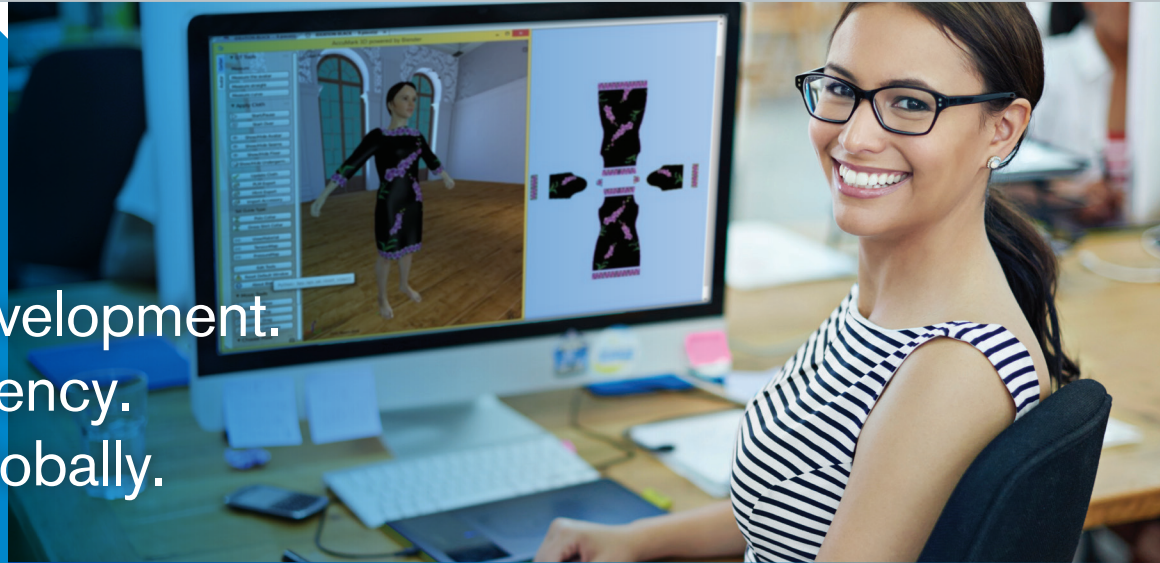


Accelerate development.
Increase efficiency.
Collaborate globally.



FOR DECADES, THE WORLD'S LEADING APPAREL BRANDS AND MANUFACTURERS HAVE RELIED ON GERBER TECHNOLOGY'S INNOVATIVE ACCUMARK® PATTERN DESIGN, GRADING, MARKER MAKING, AND PRODUCTION PLANNING SOFTWARE TO SATISFY THEIR MOST DEMANDING PRODUCTION REQUIREMENTS.

ACCUMARK'S POWERFUL QUALITY CONTROL, COMMUNICATION AND TIME-SAVING FUNCTIONS HELP BRAND OWNERS AND MANUFACTURERS MAXIMIZE PRODUCTIVITY, MINIMIZE WASTE AND MAINTAIN STRICT BRAND GUIDELINES.

ACCUMARK 3D TAKES THIS TIME-TESTED SOFTWARE TO A WHOLE NEW DIMENSION, ENABLING YOU TO UNLEASH YOUR CREATIVE VISION, ACCELERATE YOUR DESIGN PROCESS AND PROMOTE GLOBAL COLLABORATION.

Unleash creativity.

- Bring a whole new level of imagination and creativity to your design department
- Enable designers to see their designs in a realistic, 3D format, rather than as 2D sketches
- Combine the latest in 3D rendering technology with proven pattern design software
- Let designers share their 3D images for greater synergies
- Allow designers to generate better and more diverse design ideas

Increase efficiency.

- The AccuMark 3D interface is intuitive and easy to use
- Reduce design cycle times and create more styles in less time
- It's an AccuMark program, so you can quickly integrate it into your workflow
- Meet tighter deadlines by creating true-to-life virtual samples
- Leverage virtual sampling to improve the design process

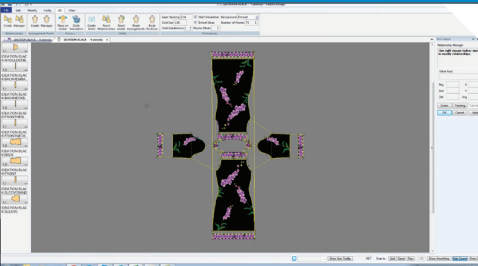
Improve collaboration.

- Share designs and virtual samples on a global basis
- Enhance communication with colleagues and partners
- Promote interaction and teamwork among designers
- Be much more responsive to your customers' needs

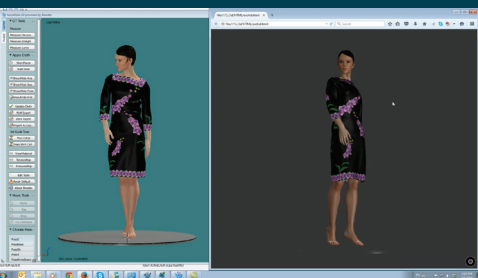
Save time and money.

- Deliver a higher quality product at a better cost
- Attain greater control of the entire design process
- Eliminate time-consuming manual fittings and refittings, as well as costly remakes
- Reduce your time to market by providing realistic digital renderings of your design from concept to finished product
- Gain efficiencies through integration with the AccuMark suite, as well as YuniquePLM™

GERBER
ACCUMARK 3D



Visualize patterns with the click of a button.



Share virtual samples with partners worldwide.

NOTE: Configurations vary according to options selected. Specifications are subject to change without notice.

AccuMark and YuniquePLM are trademarks or registered trademarks of Gerber Scientific, Inc. Microsoft and Windows are registered trademarks of Microsoft Corporation. Intel Core is a trademark or registered trademark of Intel Corp. and its subsidiaries.

All other trademarks or registered trademarks are the property of their respective owners.

Gerber Technology
24 Industrial Park Road West
Tolland, CT 06084

TELEPHONE (International)
+1(860)-871-8082

TOLL FREE (USA)
800-826-3243

www.gerbertechnology.com

Form No. AccuMark_E-04072015

Windows® 7, 8, 8.1 hardware requirements:

- The system must meet the minimum hardware requirements set by Microsoft® for the operating system and the following:

For use with AccuMark 3D	
	Recommended
Processor Speed	Intel® Core™ i7 2400 3.1 GHz or higher
System Type	64-bit OS
Hard Disk Capacity	230+ GB
Memory	16 GB
Service Packs	Current
Graphics Card	Open GL Compatible

Additional requirements:

- All operating system updates must be installed.
 - On Windows 7 systems, go to the Start Menu, Select All Programs followed by Windows Update then Install Updates. Note that this requires an Internet connection.
- A Solid State Drive (SSD)
- An open GL compatible graphics card such as the Nvidia Quadro K1000M or better.